

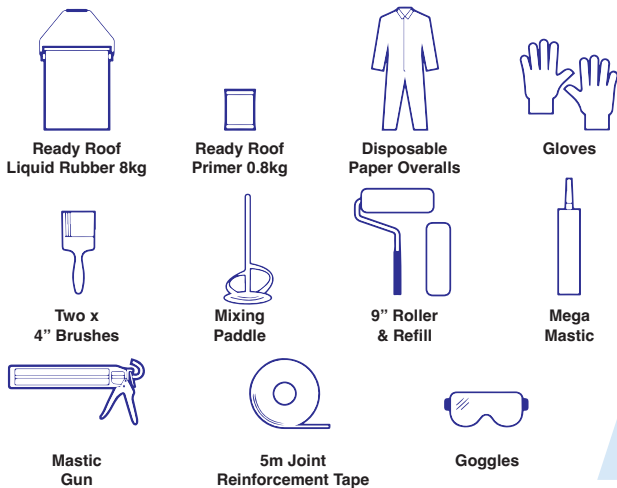
IN CONJUNCTION WITH **BULLET** WE'VE GOT YOU COVERED

READY ROOF

Seamless Liquid Rubber Roofing Kit

- Up to 5m² per kit
- Fully refurbish or repair
- Easy to apply in just ONE thick coat
- The permanent solution for flat roofs
- Includes everything you need to install yourself
- Simple application - instructions provides
- Bonds to felt, asphalt, timber, concrete, masonry, lead, GRP and more

Kit Contains



Meir Roofing & Insulation Supplies

Unit C1, M62 Trading Estate, Larsen Road, Goole, East Yorkshire, DN14 6XF

Telephone: 01405 780444

Email: sales@meir-roofing.co.uk • Web: www.meir-roofing.co.uk

READY ROOF

Seamless Liquid Rubber Roofing Kit



Application Guide



Remove all dirt, grease, dust, vegetation etc from roof surface prior to applying any product.

We recommend using a pressure washer to ensure all loose deposits that may affect the bond of the product are removed. If there are blisters or loose areas of existing membrane i.e felt, cut through these and re-bond them to the deck for optimum life expectancy. This can be achieved with a heat torch, tacks (that do not pass through the deck board) or the use of mega mastic as a bonding agent supplied in this kit.



Use the self-adhesive Ready Roof Reinforcement Tape to cover all joints, laps, gaps and cracks, including any cuts you have made to the existing roof membrane whilst preparing the area.

Remove the backing from the tape and then smooth the self-adhesive side down over the laps evenly with the lap/joint in the centre of the tape, using the palm of your gloved hand. Use a seam roller or the handle of one of the paint brushes supplied to apply pressure to the tape and achieve the optimum bond. The geotextile top of the tape will soak in the Ready Roof liquid rubber creating an extremely strong, durable bridge over the old joint beneath it.



As the condition of the surface may vary from job to job check for any fissures, small openings or gaps that may soak up the Ready Roof Liquid Rubber.

Apply a dab of Mega Mastic and use as a filler, tooling the mastic flat. Mega Mastic does not need to be fully cured prior to coating. You do not need to wait for it to cure fully through.

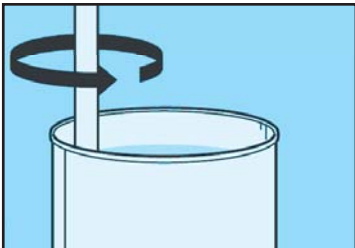
This practice will save resin and prevent any small holes appearing during the curing process (overnight) that may have not been visible when applying the resin.



All surfaces must be primed with Ready Roof Primer at a rate of 150 grams per m² (approximately) before applying Ready Roof Liquid Rubber.

Use the roller provided. Allow between 10 and 20 minutes for Ready Roof Primer to dry before overcoating. Ready roof primer can be over coated for up to one hour after it has cured/dried. It must be over-coated within this time window.

If longer than one hour passes after application the area must be re-primed with Ready Roof Primer. Only ever prime as much area as you can overcoat in 1 hour.



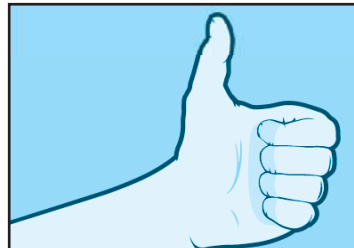
Thoroughly mix the Ready Roof liquid rubber using the paddle whisk provided on a low speed setting with your electric battery driver so as not to introduce air bubbles into the liquid.

Ensure there are no separations and any settlements at the bottom of the tin are completely dispersed so that the liquid is uniform in appearance and colour.



Apply one coat of Ready Roof liquid rubber at a minimum 1.6kg/m² using a roller on the deck or brush intricate or detailed sections.

Leave overnight to cure before trafficking/walking on the finished surface.



Check the area you have coated after it has been left to cure overnight for any areas you may have missed.

This is an opportunity to make good by applying more liquid rubber to such areas or areas where the old surface is visible due to the coating being applied too thinly.

If more than 48hrs passes before after the original application use the Ready Roof Primer before applying the Ready Roof liquid rubber as set out in box 4.

Useful Tips

- Surfaces must be dry before applying reinforcement tape, primer or liquid rubber.
- Do not apply primer too thickly.
- Do not allow primer to pool.
- Two coats of primer may be required on very porous surfaces.
- When coating hard/shiny materials, (e.g GRP, PVC etc) abrade or sand to create a good key prior to priming.
- Use masking tape to create clean, crisp edges.
- Remove masking tape before cured!



Meir Roofing & Insulation Supplies

Unit C1, M62 Trading Estate, Larsen Road, Goole, East Yorkshire, DN14 6XF

Telephone: 01405 780444

Email: sales@meir-roofing.co.uk • Web: www.meir-roofing.co.uk