



Benefits

- Simple and rapid application without the requirement for a reinforcing glass mat
- Air cured so the system can be applied at low temperatures
- Instantly shower proof
- Cold applied, no hot works insurance required
- No further solar reflective treatment required
- Units can be opened and resealed with no surface skin inside the tin
- Fire tested to Broof T⁴

Coverage Rates

5 Year Guarantee System Euroshield P5

One Coat 1.5L/m²

10 Year Guarantee System Euroshield P10

Base Coat 1.5L/m²

Top Coat 0.5L/m²



Meir Roofing and Insulation Supplies supply all types of roof waterproofing systems to contractors, specifiers and clients across the whole of the UK from their base in the North of England. Whatever you require, from traditional roofing materials such as torch-on membranes, liquid waterproofing, mastic asphalt, insulation, sheeting and cladding, lead or copper, to green roofing or bio-diverse packages, we are able to help.

Our staff are experienced, highly trained and motivated personnel in all aspects of roofing and are there to help you whatever your requirement may be, large or small. We are committed to protecting the environment and purchase from renewable sources wherever possible.



LIQUID WATERPROOFING

Acrylic, Asbestos Encapsulation, Balcony Coat, Car Park, Cladding Coating, Roof light repair Refurbishment, Gutter lining

BITUMEN TORCH-ON MEMBRANES

APP, SBS and APAO modified, Self-adhesive, Heat activated, Anti-root, Tanking, Vapour barriers

MASTIC ASPHALT

Roofing, Flooring and Paving, Polymer Modified, Tanking

SINGLE PLY

PVC, TPO, EPDM Membranes, Trims and Termination Bars, Seaming Strips, Adhesives, Tools

INSULATION

PUR / PIR, Extruded Polystyrene, Expanded Polystyrene, Cut to Falls, Foamglass, Cement Topped XPS, Phenolic, Linear Fire stops, Acoustic Infill, Reflective Foil, Mineral Wool

GREEN ROOFS AND LIVING WALLS

Intensive, Extensive, Bio Diverse, Stud Membranes, Geotextiles, Paving Slabs, Drainage Mats

HOT MELT

Fully bonded hot melt system

PROMENADE AND WALKWAY

Glass Reinforced Concrete, Rubber Walkways, Paving Slabs, Equestrian and Playgrounds, Porous Concrete, PU Adhesive and Tile Spacers, Pave Pad Supports

SOLUTIONS

Bitumen Primers, Aluminium Paint, Solar Reflective Paint, Sealants, Polyurethane Adhesive

PROFILED SHEETING AND DECKING

Metal Sheeting, Tile or Slate Effect, Fibre Cement, Decking, Trims and Fixings, Roof lights, Barrel Vaults, Bitumen Corrugated Sheets, Flashings, Composite Panels

PITCHED ROOFING

Natural, Rubber and Fibre Cement Slates, Breathable and Non-Breathable Membranes, Architectural Ridge Tiles and Fittings, Velux Windows, Chimney Pots, Ventilation

SUNDRIES

Vents and Outlets, Lead Replacement Flashing, Trims and Edges, Protection Boards, Roof lights, Polythene Sheets, Radon Barriers, Methane Barriers

FOR MORE INFORMATION ON THE COMPLETE MEIR ROOFING RANGE CONTACT:

Unit C1, M62 Trading Estate, Larsen Road, Goole, East Yorkshire, DN14 6XF

Tel:01405 780444 Fax:01405 780445 Email:sales@meir-roofing.co.uk



euro

POLYMERS GB

Euroshield P5 & P10

Guaranteed Liquid Coating System for Flat Roofs

October 2015 Edition

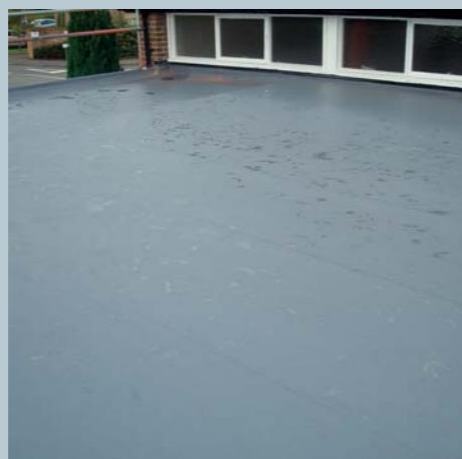
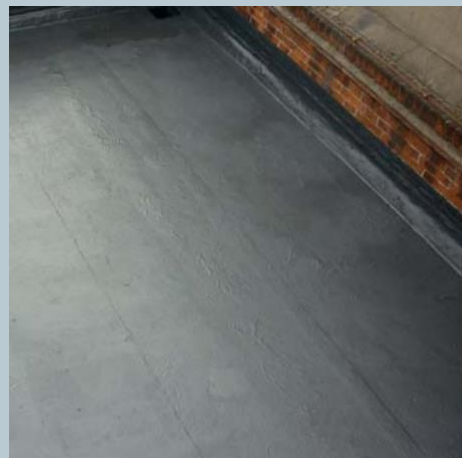


- Cost effective
- Simple and rapid application
- Instantly showerproof
- Cold applied
- Fire tested to Broof T⁴
- Guarantees of 5 and 10 years

Euroshield P5 & P10

Guaranteed Flexible Elastomeric Waterproofing for Flat and Pitched Roofs

Euroshield is a liquid applied moisture tolerant system which has been specifically designed to provide an excellent price to performance ratio and is available with a 5 or 10 year product guarantee as standard.



Areas of application

- Mastic asphalt
- Sanded bituminous felt
- Mineral bituminous felt
- Concrete deck
- Timber deck

Application Guide

Substrate preparation

Existing substrates should be sound, dimensionally stable and free of loose matter and any contaminants which would impair adhesion. Jet wash existing surfaces using a 3000psi minimum pressure washer. All moss, lichen and fungal growth should be removed. Clean using a mild soap solution and a fungicidal wash.

Mastic asphalt surfaces

Make all necessary repairs to the asphalt, with **Eurogard Joint Sealer** or **Eurogard RPM** (Repair Patch Mortar). Any blisters should be removed prior to application. Repairs made with standard mastic asphalt will require 28 days to cure prior to application of this system. Polymer modified asphalts will need 7 days prior to application. Flux oils could delaminate the system if these periods are ignored.

Bituminous surfaces

Blisters within an existing bituminous membrane should be star cut, dried out and re-sealed with **Anchor Membrane Adhesive** before applying the **Euroshield** system.

Concrete surfaces

New concrete must be allowed to cure for a minimum of 28 days. Polymer modified concrete with a moisture content of 6% can speed up this process needing a minimum of 7 days prior to application. Concrete should be float finished. Vacuum shot blasting can be employed to clean the surface of the concrete should this be required and will provide a better mechanical 'key' in heavy duty environments. Primer is always required to this surface type. See priming section for details.

Timber surfaces

Ensure that the timber deck is securely fixed in accordance with current British Standards. Apply **Anchor Membrane** with 100mm side laps and 150mm end laps, adhered to the deck with **Anchor Membrane Adhesive** which should be applied with a ribbed squeegee, at a minimum of 1kg/m². Remove any excess adhesive from the laps before applying **Euroshield**.

Anchor Membrane Adhesive dries in 4 hours. If immediate application of **Euroshield** is required the **Anchor Membrane** can be secured by nailing clout nails to the side and end laps to secure in position.

Angle fillets

Angle fillets should be present to all 90° angles.

Gridding

Prior to product application ensure gridding has been completed to achieve a smooth and consistent finish. Mark out the area that the product unit will cover. For example, **Europrime WB** is to be applied at a coverage rate of 0.25L/m². A 5L unit of the primer will cover 20m². Grid out an area 4 x 5m and apply the coating to this entire area evenly. Failure to grid will result in an uneven dry film thickness which could invalidate any warranty. For further information please contact our Technical Support Team.

Priming

Mastic asphalt and bituminous surfaces do not usually require priming.

Natural rock asphalt is porous and will require **Europrime WB** at a coverage rate of 0.5L/m².

Concrete, timber, foreign coatings and existing GRP systems will require priming. Prime with **Europrime WB** at a coverage rate of 0.25L/m².

Metal surfaces should be primed with **Europrime Metal** at a coverage rate of 0.25kg/m².

An additional coat of primer may be required for extremely porous substrates, contact our Technical Support Team for details. MMA based products are rapid curing and typically cure within 30 minutes in normal working conditions.

Detailing

Areas that should be detailed include all up-stands, down pipes, drains and outlets.

Apply **Euroshield P5** or **Euroshield P10 Base** at a minimum coverage rate of 1.5L/m² prior to the application of the full field area.

Terminations

Euroshield P5 or **Euroshield P10 Base** should be terminated into a flashing, chase, Euro Polymers Trim or Termination Bar.

Euroshield application

The product must not be applied in standing water or freezing conditions or if these conditions are likely to occur before the system has dried. The product must be vigorously stirred before application to evenly distribute the reinforcing fibres.

Apply only at deck temperatures between -5°C and + 40°C. The product is applied in a single coat using a medium piled roller or rapid applicator brush.

Euroshield is a single pack air dried product. Normal drying time is 4-8 hours in ventilated conditions.

To areas where structural/deck movement is likely to occur, apply a layer of **Euroshield P5** or **Euroshield P10 Base Coat** at a coverage rate of 1.5L/m² reinforced with **Polymat 225**.

Euroshield Coverage Rates:
Euroshield 5 year system
Euroshield P5: 1.5L/m²

Euroshield 10 year system:
Euroshield P10 Base Coat: 1.5L/m²
(ensure that the Base Coat is fully dried prior to application of the Top Coat.)

Euroshield P10 Top Coat: 0.5L/m²

Colours

Euroshield P5 is available in dark grey.

Euroshield P10 Base Coat is available in black and **Euroshield P10 Top Coat** is available in dark grey.

Storage

Store in dry, cool conditions, preferably at temperatures between 10°C and 20°C. Tins can be opened and re-sealed without loss of product and maintains its shelf life.

Temperature

Coverage rates can vary with temperature. Avoid storing in cold conditions prior to application.

Site testing

The above coverage rates are for guidance only. Site application tests are recommended to confirm actual coverage rates.

System components

Euroshield P5 – 5L & 15L units
Euroshield P10 Base Coat – 5L & 15L units
Euroshield P10 Top Coat – 5L & 15L units
Europrime WB – 5L & 15L units
Europrime Metal – 1kg, 2.5kg & 5kg units
Europol Roof Repair – 5kg units
Anchor Membrane Adhesive - 25kg units
Anchor Membrane - 20mx1m roll
Euro Polymers rollers
Euro Polymers rapid applicator brush
Eurogard joint sealer - 2L unit
Eurogard RPM (Repair Patch Mortar) - 5kg & 10kg units