



MADCOWLS

PROBLEM SOLVING CHIMNEY COWLS

JD Burford Limited

Unit 2D Hirwaun Industrial Estate
Aberdare, South Wales, UK, CF44 9UP

Phone: 01685 811882 **Fax:** 01685 813861

Email: sales@madcowls.co.uk

www.madcowls.co.uk

Chimney problems • Smoke • Rain • Nesting

NEW PRODUCTS FOR 2014



10 – Page 6

New Mad Senior

Freshly re engineered to allow for greater structural strength. In our opinion this is the best circular shaped static anti-down-draught cowl on the market, it provides excellent rain protection whilst allowing escaping gases to flow out freely.



56 – Page 6

Available manufactured completely from stainless steel. In stainless steel guise this is the ultimate product where corrosive fuels such as smokeless fuel are burnt.



57 – Page 6

The Mad Senior chimney liner cowl

Made from durable stainless steel top to bottom. Available painted if required. The aerodynamic shape allows for maximum down-draught protection and maximum rain protection, whilst allowing the senior to be directly joined to a chimney liner. In our opinion there is no better fitment. We are so confident in its superior performance, we even recommend its fitment if it is unknown that a down-draught problem exists or not. The senior cowl chimney liner cowl is available for use with 5 or 6 inch flue liners.



58 – Page 6

New Large Base Senior cowl

This cowl is designed to cater for oversized chimney pots. Fits diameter above 290mm up to 400mm. Every bit as effective as the standard sized Mad senior cowl.



59

New Stainless Steel Square Birdguard

This cowl is available in sizes from 10 inch square up to 13 inch square. Knowing how difficult it can be to find a cowl to fit a square chimney pot in the first place, we felt that it is important to have an option for customers to fit a square cowl that will stand the test of time. Suitable for all types of solid fuel and smokeless fuel. Can be painted Terracotta, buff or black.

The Burford family have been designing and manufacturing chimney cowls since approximately 1980 and therefore, have a great depth of knowledge of the market.

Operating out of our 30,000 square foot factory, 25 miles north of Cardiff, we employ a design and product engineering team along with a manufacturing unit. This enables us to pay attention to each customer's individual needs, coupled with a speedy, efficient service.

No order is too large or too small and every order is important to us.

Our products are branded 'MAD' – METAL ANTI DOWNDRAUGHT. They do, whenever necessary, carry and comply to the latest certificates of conformity.

All our cowls are made, where necessary, from high-grade stainless steel and aluminium.

Our customer service includes:

- 48 hour delivery on our mainline products.
- Money back guarantee, if products are used properly, when they do not meet your expectations.
- Products arrive fully assembled and ready to fit. They include a mesh birdguard and desired fixing kits, i.e. bolt or strap fixing. Our *in house* design team can usually turn your ideas into products within four weeks.

We are very much a CUSTOMER ORIENTATED COMPANY and offer the highest quality products at reasonable and competitive prices.

Anti downdraught cowls	4
Birdguards	10
Liner cowls & pot hangers	14

ANTI DOWNDRAUGHT COWLS

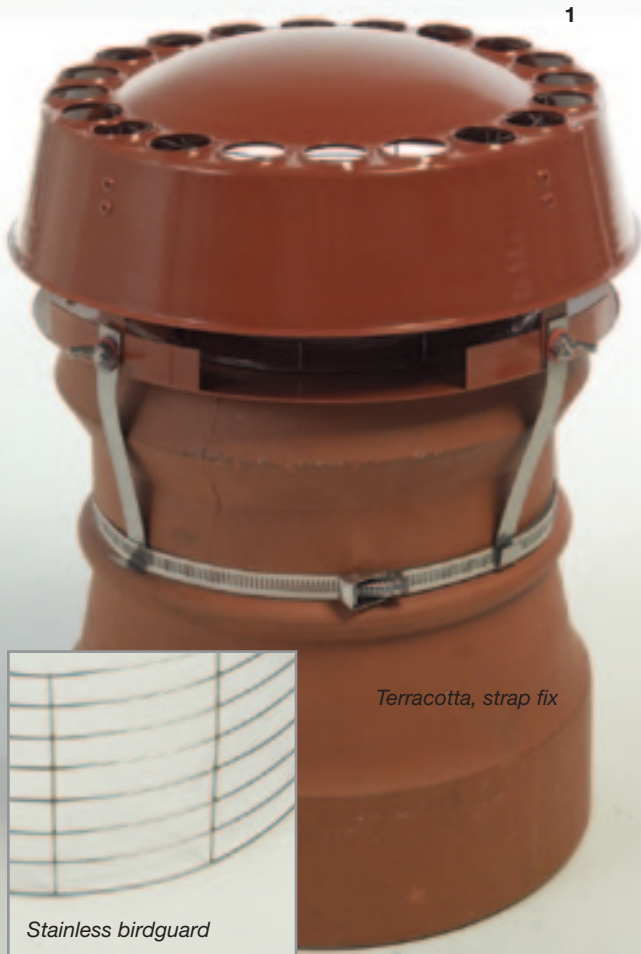
The MAD Cowl is the most popular anti draught cowl in our range.

The reasons for this is that its compact and aerodynamic shape allows it to combat draught, whilst only the highest quality materials are used allowing longevity of use at very competitive prices.

This static cowl in painted form can be used with all fuels and has a test certificate to BSEN 1856 1:2003 and BSEN 1443:2003 and as with all MAD cowls that have a test certificate, the only materials used are those stipulated in the test certificate.

The MAD Cowl benefits from the following:

- Sold fully assembled and ready to fit
- No special tools required when fitting
- Made from 1.2mm aluminium and stainless steel
- Backed up by the MAD cowl money back guarantee
- Sold complete with stainless steel hook bolt or strap fixing kit (whichever is desired) (see picture 8 for illustrations)
- Stainless steel birdguard
- Has a test certificate to BSEN 1856-1:2003 and BSEN 1443:2003
- Height 140mm – Width 310mm
- Unpainted versions suitable for most fuel types
- Painted versions have a corrosive resistant powder coat finish, which makes it suitable for all fuels (see fuel chart)
- Recommended birdguard is removed for solid fuel applications
- Suitable for pot sizes up to 300mm
- Highly effective in preventing draught
- Withstands flue temperatures up to 200°C



Terracotta, strap fix



Stainless birdguard

SUITABILITY CHART

	Coal	Wood	Gas	Oil	Smokeless Fuels
MAD Cowl aluminium	✓	✓	✓	✓	
MAD Cowl painted	✓	✓	✓	✓	

Painted = terracotta, black, buff



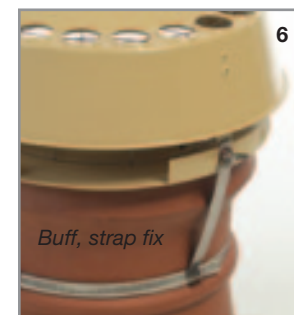
Terracotta, bolt fix



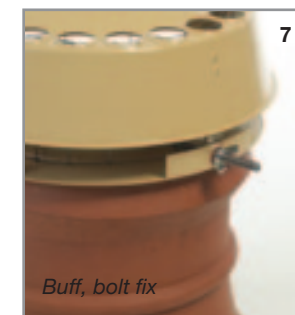
Black, strap fix



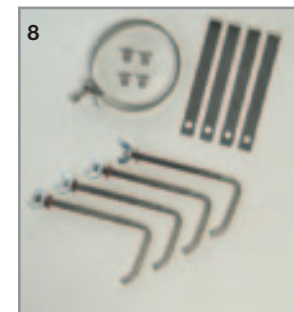
Aluminium, bolt fix



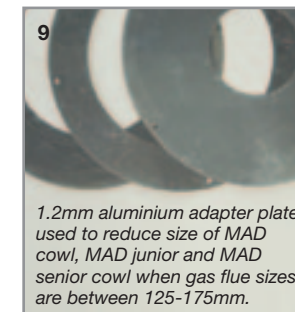
Buff, strap fix



Buff, bolt fix



8



9

1.2mm aluminium adapter plate used to reduce size of MAD cowl, MAD junior and MAD senior cowl when gas flue sizes are between 125-175mm.

ANTI DOWNDRAUGHT COWLS

MAD Senior

Freshly re-engineered to allow for greater structural strength. In our opinion this is the best circular shaped static anti-down-draught cowl on the market, it provides excellent rain protection whilst allowing escaping gases to flow out freely.

Suitable for any fuel types, the MAD senior cowl benefits from the following:

- Sold fully assembled and ready to fit
- No special tools required when fitting
- Made from 1.6mm aluminium
- Stainless steel birdguard
- Sold complete with stainless steel hook or strap fixing (whichever is desired)
- Has a test certificate to BSEN 1856-1:2003 and BSEN 1443:2003
- Height 149mm – Width 400mm
- Suitable for flue sizes 125-250mm
- Highly effective in preventing downdraught
- Withstands flue temperature up to 200°C
- Backed up by the MAD cowl money back guarantee
- Suitable for all fuels, although recommended removal of birdguard for solid fuel application

58



New Large Base Senior Cowl



10

*MAD Senior
Terracotta, strap fix*

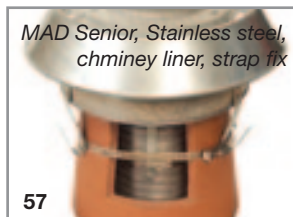


Integrated strapping system that allows for an easier fitting negating the need to bolt separate leg attachments onto the cowl, ensuring an easy fitment. Strap down legs are colour matched to the body of the cowl so that they do not stand out from the rest of the cowl and chimney pot – particularly advantageous in conservation areas or when there is a need to fit a chimney cowl to a listed building.

SUITABILITY CHART

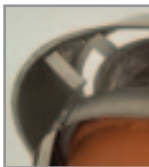
Suitable for all fuels but we recommend that the stainless steel version is used on more corrosive fuels such as smokeless fuel.

	Coal	Wood	Gas	Oil	Smokeless Fuels
MAD Senior terracotta	✓	✓	✓	✓	
MAD Senior St. Steel	✓	✓	✓	✓	✓



57

*MAD Senior, Stainless steel,
chimney liner, strap fix*



New structural support that provides strength right across the body of the cowl



56

*MAD Senior
Stainless steel, strap fix*

58. New Large Base Senior cowl

This cowl is designed to cater for oversized chimney pots. Fits diameter above 290mm up to 400mm. Every bit as effective as the standard sized Mad senior cowl.

13

*MAD Junior,
Terracotta, strap fix*



*MAD Junior,
Terracotta, bolt fix*

15



*MAD Junior,
Aluminium, strap fix*

SUITABILITY CHART

	Coal	Wood	Gas	Oil	Smokeless Fuels
MAD Junior aluminium	✓	✓	✓	✓	
MAD Junior terracotta	✓	✓	✓	✓	
MAD Junior St. Steel	✓	✓	✓	✓	✓

16



*MAD Junior,
Aluminium, bolt fix*

17



*MAD Junior,
Stainless steel, strap fix*

MAD Junior

The very popular MAD junior cowl is our least expensive static anti downdraught chimney cowl. Although it is the least expensive in our down draught range, we have not compromised on materials.

Made from 1.6mm aluminium with a stainless steel birdguard, this cowl still exceeds the quality of materials used by many of our competitors.

The MAD junior cowl benefits from:

- Sold fully assembled and ready to fit
- No special tools required when fitting
- Made from 1.6 gauge aluminium
- Stainless steel birdguard
- Sold complete with stainless steel hook or strap fixing kits (whichever is desired)
- Has a test certificate to BSEN 1856-1:2003 and BSEN 1443:2003
- Height 160mm – Width 310mm
- See fuel chart for suitability of painted and unpainted versions
- Suitable for flue sizes 125-250mm
- Effective anti downdraught qualities
- Withstands flue temperatures up to 200°C
- 'All stainless steel' version available
- Backed up by MAD cowl money back guarantee
- Recommended birdguard is removed for solid fuel applications.

ANTI DOWNDRAUGHT COWLS

MAD Spinner Cowl

The MAD spinner cowl is a British made revolving chimney cowl designed to eradicate downdraught, whilst the rotating action assists ventilation.

Being made at our factory in the UK allows us to fully control the manufacture of this very technical cowl, whilst ensuring only prime materials are used in the production process.

Both the fins and base are available in four different finishes at no extra cost. This painted finish prevents reflections being transferred to neighbouring buildings, whilst the product is rotating.

The spinner cowl is available with a stainless hook bolt or strap fixing shown in the pictures opposite.

MAD Spinner
Terracotta, strap fix

The MAD spinner cowl:

- Fits a range of flue sizes up to 250mm
- Withstands flue temperatures up to 200°C
- Backed up by the MAD cowl money back guarantee
- Sold fully assembled and ready to fit
- Sold complete with a stainless steel hook bolt or strap fixing (whichever is desired)
- Has a test certificate to BSEN 1856-1: 2003
- Highly effective in preventing downdraught and increasing ventilation
- Height 320mm – Width 300mm
- Suitable for all fuel types
- Withstands wind speeds up to 50mph
- Bearings immersed in an oil bath to provide superior lubrication

NOTE: All revolving chimney cowls may require annual maintenance to remove debris that may stop them spinning.

19



MAD Spinner
Buff bolt fix

20



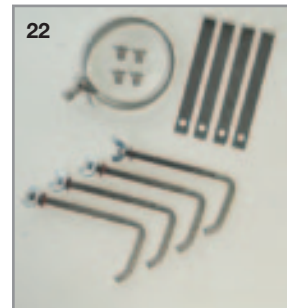
MAD Spinner
Black, hook bolt fix

21



Underside

22



Certification

SUITABILITY CHART

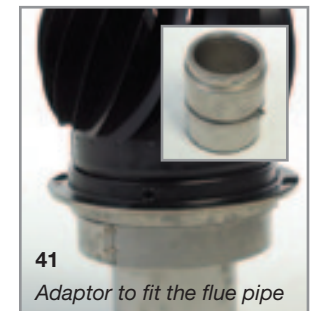
	Coal	Wood	Gas	Oil
MAD Spinner	✓	✓	✓	✓
MAD Spinner St. Steel	✓	✓	✓	✓

Flue pipe adaptor

Another new product from MAD cowls is the spinner adaptor sleeve for 5 and 6 inch flue pipe applications.

This sleeve is designed to raise the spinner up from the top of the twin wall flue pipe creating a vacuum for the spinner to draw on while rotating, thus increasing ventilation (see price list).

Please contact us to check for suitability of each make of flue pipe.



41

Adaptor to fit the flue pipe

Junior Birdguard



23, 24. The nuisance caused by birds, small animals and leaves entering the chimney can be resolved by fitting a cowl from our birdguard range. Available with a multifuel birdguard (pic. 23) which allows the cowl to be used for gas and oil as well as solid fuel, or pic. 24 which is purely for solid fuel applications. This type has a larger mesh to reduce clogging, associated with burning timber.

The Junior Birdguard, pictures 23 and 24, is made of aluminium. But, unlike most birdguards that are held together with rivets, both are assembled using 15 stainless steel nuts and bolts to give the cowl a longer life.

- Supplied fully assembled
- Backed up by the MAD cowl money back guarantee
- Fits 150mm to 250mm flues
- Gas birdguard (pic.23) complies with BS5871:2005
- Test Certificate to BSEN 1856-1:2009

24



Junior Solid fuel birdguard

- Stops birds becoming trapped behind gas fire back panels
- Rain cap reduces rain entry, preventing structural damage caused by freeze thaw
- Incl. stainless steel hose clip
- Painted in a highly durable terracotta powder coat finish

25. Stainless steel Junior birdguard

Also available in Stainless Steel, providing a more durable and long lasting Birdguard.

- Can be fitted over a pot hanger
- For solid fuel and smokeless fuel
- Fits flue sizes 150 – 250mm
- Made completely from stainless steel
- Incl. stainless steel hose clip
- 1 inch x 1 inch stainless steel birdguard
- Supplied fully assembled
- Great value for money

25



Junior birdguard, stainless steel



Pot hanger

Rain Cowl

28



Rain cowl & solid fuel birdguard, all stainless steel

26



Rain cowl & solid fuel birdguard

27



Rain cowl & multifuel birdguard

28. Stainless steel rain cowl

The height size and shape of this cowl makes it very popular amongst chimney sweeps. The tall construction and domed lid allows a sweeping brush right up into the cowl, whilst the stainless steel construction allows for a longer lasting birdguard.

- Suitable for use with oil, coal, wood and smokeless fuel
- Made from 1mm stainless steel
- Fits flue 150 – 200mm
- Terminals up to 250mm
- Inc. stainless steel hose clip
- Supplied fully assembled
- Can be powder coated, terracotta or buff

26, 27. Rain Cowl

Our budget birdguard provides excellent rain, wind, bird and animal protection and is available with a solid fuel birdguard (1" x 1" large holes) or a multifuel birdguard, which complies with BS5871.

Not to be used with smokeless fuel

- Suitable for use with oil, gas (no.27), wood and normal coal.
- Made from galvanised steel and powder coated terracotta
- Includes stainless steel hose clip
- Fits sizes 150mm – 200mm pots
- Supplied fully assembled
- Test Certificate to BSEN 1856-1:2009

BIRDCUARDS

29



Woodburning birdguard,
terracotta, strap fix

30

Woodburning-
birdguard,
buff, strap fix

29, 30. Woodburning birdguard

- Provides a larger opening for escaping gases than standard birdguards
- Designed to prevent bird, leaves or vermin entry, whilst helping prevent rain entry
- Available in buff or terracotta
- Fits 125mm – 250mm flues
- Inc. s.steel strap fixing kit
- Suitable for gas and wood
- Ready assembled

31. Stainless steel birdguard with base

- Designed to prevent bird, leaf or vermin entry, whilst helping to prevent rain entry
- Made from 1mm stainless steel and powder coated terracotta or buff
- Fit onto chimney pots up to 250mm or over a pot hanger
- Stainless steel hose clip
- 1 inch x 1 inch birdguard to stop any debris build up
- Supplied fully assembled
- Provides a larger opening for escaping gases, than standard birdguards

31



Terracotta powder coated
Stainless Steel birdguard with base

32. Square birdguard

Specifications of this cowl are the same as the rain cowl, however, it is designed for square pots. Made from galvanised material and powder coated terracotta. Sold complete with stainless steel hoseclip.

32



33. Large birdguard

Designed for larger chimney pots, this cowl is available as a 320 or 370mm diameter application. Powder coated in a durable terracotta or buff finish with a stainless steel extra long hose clip.

34. Capping cowl

Used to cap off unused chimneys, also providing good ventilation, by raising the arms upwards or downwards you can adjust the level of ventilation.

- Powder coated terracotta or buff for longevity
- Inc. stainless steel hose clip

34



Capping cowl

35. Sprung birdguard

Designed to stop large birds and debris entering the pot. The sprung birdguard is manufactured from M10 steel with a powder coated terracotta finish. It is designed to spring to the diameter of the pot, fitting both round and square pots up to 250mm.

36. Spark arrestor

The MAD spark arrestor has two mesh inserts. This means that it helps stop any debris that is still alight.

- Fits pots 125 – 250mm

33



Large birdguard

35

Sprung
birdguard



36



CHIMNEY LINER COWLS

37

Solid fuel
chimney
liner cowl

1" x 1"
mesh

38

Buff

Special to fit
square pots

37. Solid fuel chimney liner cowl

The solid fuel chimney liner cowl is designed to fit flexible flue liner to a birdguard cowl application, without the need to remove the chimney pot.

The extra features and superior quality of this product makes it one of the best on the market.

The illustration shows how the cowl attaches to the chimney liner with a strong stainless steel fixing strap and hose clip.

The cowl then sits on the pot with another stainless steel hose clip holding it secure. This cowl also benefits from a unique system, whereby the hose clips thread through the fixing straps so there is far less chance of losing any fixings, during fitting.

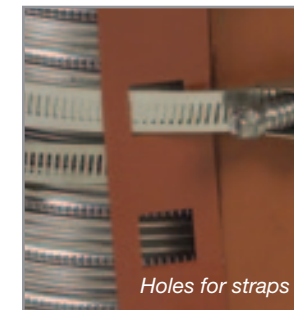
The solid fuel liner cowl:

- Painted terracotta, buff or natural finish
- Made from strong 1mm stainless steel
- Removable lid
- Features unique strap threading system
- Suitable for solid fuel
- Includes 2 x stainless steel hose clips
- Supplied fully assembled
- Stainless steel birdguard
- Provides protection against birds, leaves, vermin and rain
- Eliminates need to remove chimney pot
- Backed up by the MAD cowl money back guarantee
- Available for 5, 6 and 7 inch chimney liner
- Large opening for escaping gases

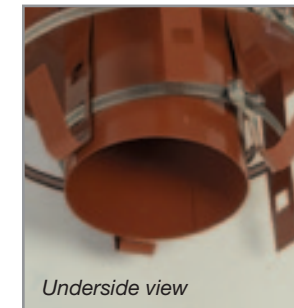
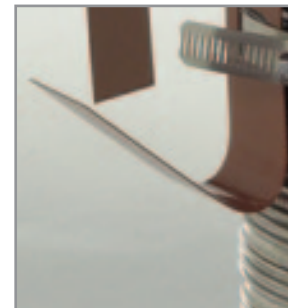
Fitting



Lid can be removed



Holes for straps



Underside view



CHIMNEY LINER COWLS

39



Stainless birdguard

39. Anti draught chimney liner cowl

The anti - draught chimney liner cowl is designed to fit a flexible flue liner to our most popular anti - draught cowl (the MAD cowl).

Using the same fixing techniques as the solid fuel version, allowing installation to a liner, eliminating the need for the pot to be removed.

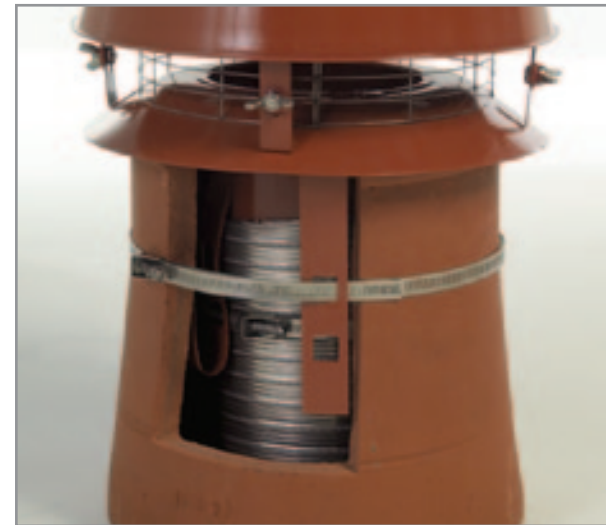
The cowl benefits from:

- Painted terracotta or buff
- Features unique strap threading system
- Inc. 2 x s.steel hose clips
- Supplied fully assembled
- Stainless steel birdguard
- Made from stainless steel, with an aluminium lid
- Backed up by the MAD cowl money back guarantee
- Removable lid
- Eliminates need to remove chimney pot
- Available for 5, 6 and 7 inch chimney liners

SUITABILITY CHART

	Coal	Wood	Gas	Oil	Smokeless Fuels
Anti draught chimney liner	✓	✓	✓	✓	

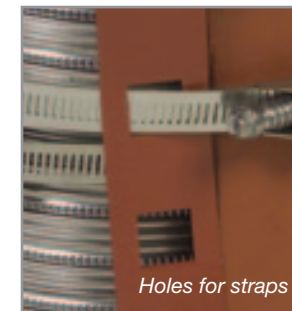
Fitting



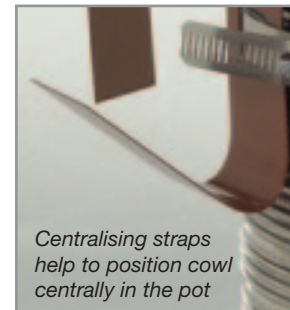
What makes our chimney liner cowl most useful?



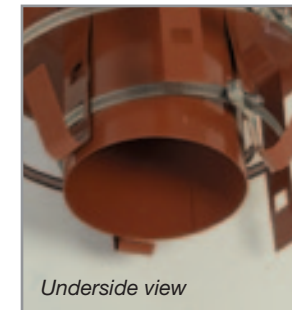
Removable lid



Holes for straps



Centralising straps help to position cowl centrally in the pot



Underside view

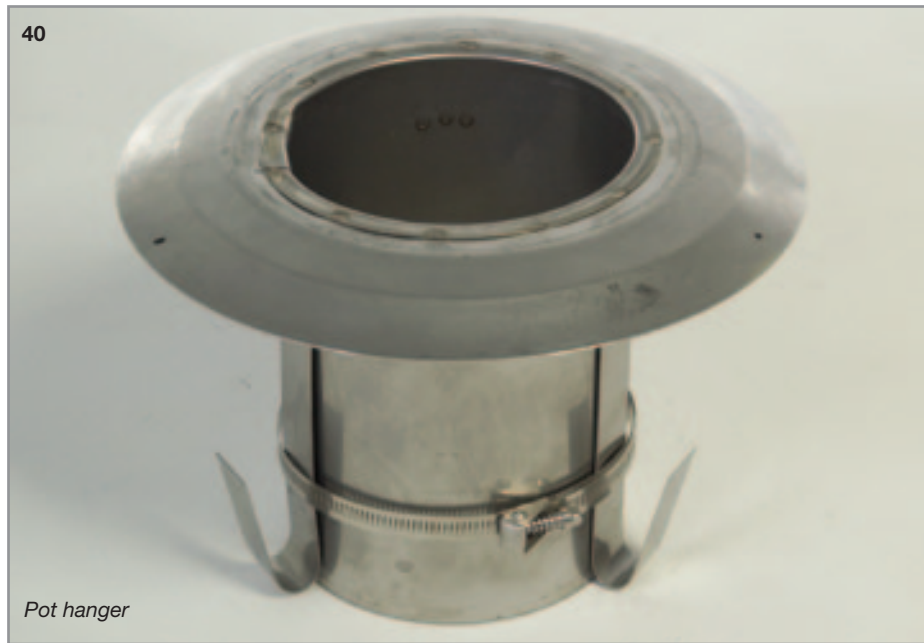


POT HANGER

This simple pot hanger is great value for money and is made completely from stainless steel. It uses the same securing strap system to attach to the liner as the liner cowls on pages 14-17 and allows a chimney cowl to be fitted over the top of it.

Shown below is a selection of cowls we recommend fitting with this pot hanger, which includes an anti-downdraught cowl and our great value all stainless steel birdguard.

- Pot doesn't have to be removed for fitting
- Available for 5, 6, and 7 inch chimney liner
- Sold ready assembled with 1 x stainless steel hose clip
- Can be made for square pots
- Standard version shown, back filling version is also available



ANTI DOWNDRAUGHT COWLS

Mini Spinner cowl

The Mini Spinner is a new product from Mad Cowls. It is made to the same high standards as the original spinner cowl, both in specification and design. The only difference is the size – making it more suitable for smaller flue pipes and/or ventilation pipes used at landfill sites.

The Mini Spinner cowl:

- Stainless steel construction with a die cast aluminium base
- Fits flue sizes 80mm – 180mm
- Withstands flue temperatures up to 200°C
- Backed up by the MAD cowl money back guarantee
- Sold fully assembled and ready to fit
- Sold complete with a stainless steel strap fixing kit
- Has a test certificate to BSEN 1856-1:2009
- Highly effective in preventing downdraught and increasing ventilation
- Suitable for all fuel types
- Withstands wind speeds up to 50mph
- Bearings immersed in an oil bath to provide superior lubrication



SUITABILITY CHART

	Coal	Wood	Gas	Oil	Smokeless Fuels
Mini Spinner	✓	✓	✓	✓	
Mini Spinner St. Steel	✓	✓	✓	✓	✓

NOTE: All revolving chimney cowls may require annual maintenance to remove debris that may stop them spinning.

46. MAD High chimney birdguard

The nuisance caused by birds, small animals and leaves entering the chimney can be resolved by fitting this cowl. Also used to provide basic rain protection

- Fits flues up to 275mm outside diameter
- Corrosion resistant mesh, with 1inch x 1inch opening to prevent clogging
- Strap fixing

45 MAD Box Cowl, bolt fix



45. MAD Box cowl

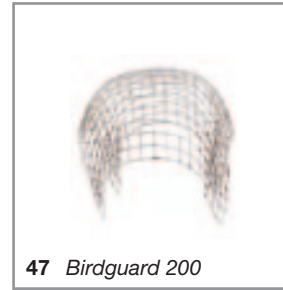
This box shaped anti draught cowl benefits from the following:

- 1mm aluminium
- Sold complete with hook bolt or strap fixing kit (whichever desired)
- No tools required for fitting
- Withstands flue temperatures of up to 200°C
- Fits all flue sizes up to 250mm

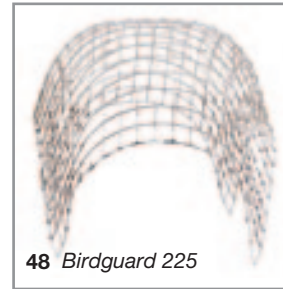
46 MAD High chimney birdguard, terracotta, solid fuel, strap fix



47 Birdguard 200



48 Birdguard 225



52 Gas Cowl
Certified to BSEN
1856-1:2009



50 Plate and Clamp



47, 48. Birdguard 200/225

General application birdguard for use with coal, seasoned wood and Normal Coal.

- Pushes into flue outlet
- Packs are sold in sizes 200 or 225mm

51 Terminal Cowl



Good advice...

All flues and chimneys should be periodically checked and swept by a professional chimney sweep to prevent blockages from a number of causes, including nests, soot build up or other debris blockages.



Quality Guarantee

All MAD cowls listed with the phrase '*Backed up by the MAD cowl money back guarantee*' are covered by a 12 month guarantee against faulty material or workmanship.

In addition, these items carry a further guarantee that should they fail to remedy the initial problems after three months, then they may be returned to the stockist with proof of purchase, in order to obtain a refund.

This guarantee will not apply where a cowl has been subjected to higher temperatures than 200°C, where modification of that cowl has taken place or excessive wind speeds are experienced.

THE MAD COWL STAINLESS RANGE

As Solid fuel appliances become more popular, and more people across the country are turning to renewable fuels as a source of energy, we feel that greater stresses are being placed on your average chimney cowl.

At Mad Cows we offer the most comprehensive range of STAINLESS STEEL chimney cowl products available on the market. As modern regulations move forward, there is only one range of chimney cowls that can satisfy modern requirements – the 'MAD COWL' range.

Below are the products listed within our brochure that are completely manufactured from durable stainless steel. Find the picture number within our brochure for further information.

